

## Using your Epson printer or scanner with your Mac

Printer and Scanner drivers to use your Epson printer are distributed through Apple. Use one of the following methods to obtain the latest drivers for your Epson printer or scanner and computer running Mac OSX 10.6 or higher. The drivers support Printing, Scanning and Faxing where applicable.

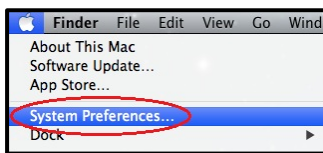
The options to obtain the drivers are:

- [When adding the printer in System Preferences](#)
- [Download the latest drivers from the Apple support website](#)
- [Use Apple Software Update \(10.6/10.7\) or App Store \(10.8+\)](#)

If you have trouble printing after installing the latest drivers [CLICK HERE](#).

### System Preferences Instructions

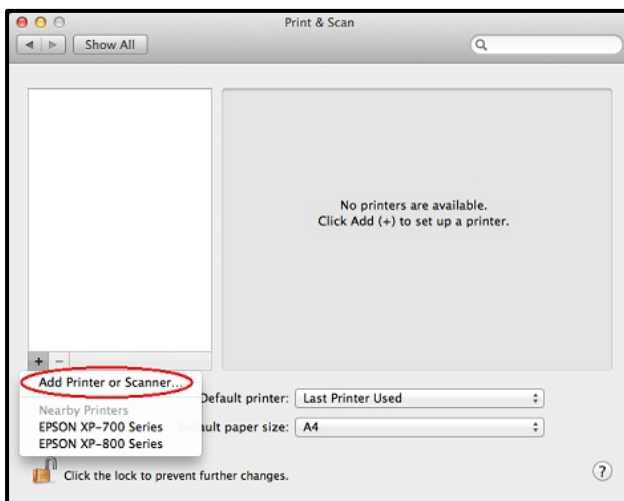
1. Connect your printer to your computer with USB or to your network with a wireless or wired connection.
2. Open **System Preferences** from the **Apple menu** on your Mac.



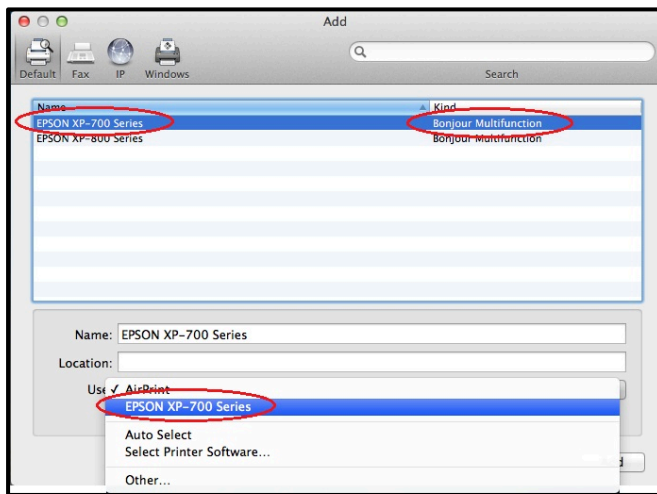
3. Click on the **Print & Scan** or **Print & Fax** icon.



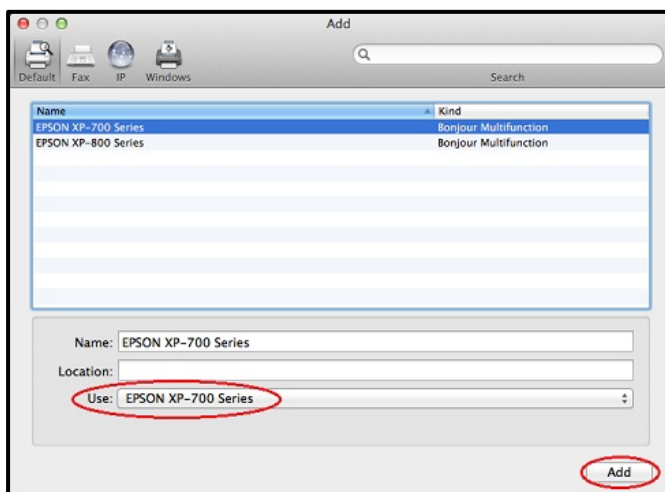
4. Click on the **+** button and select **Add Printer or Scanner**.



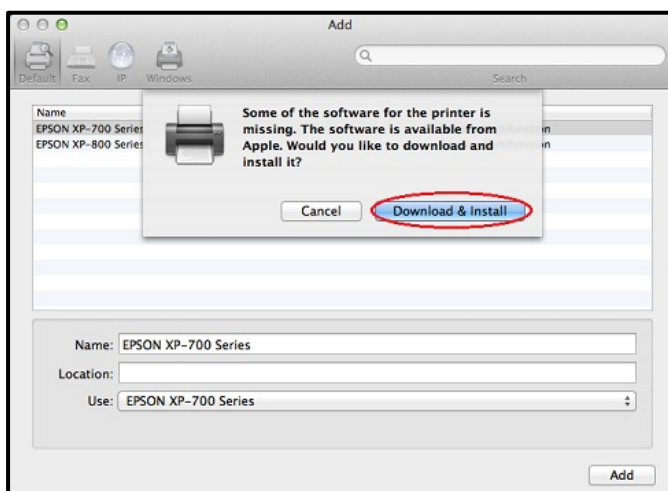
5. Select your printer in the list, ensuring the **Bonjour** option is selected if there is more than one. Change the driver to **Use** from Airprint to the **EPSON-series** driver.



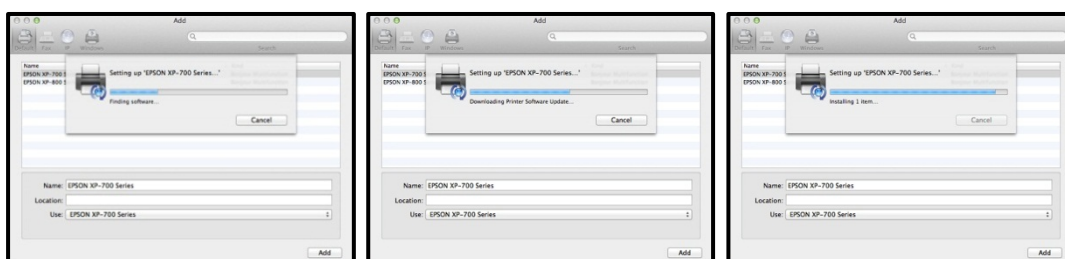
6. Once the correct printer and driver are selected click **Add**.



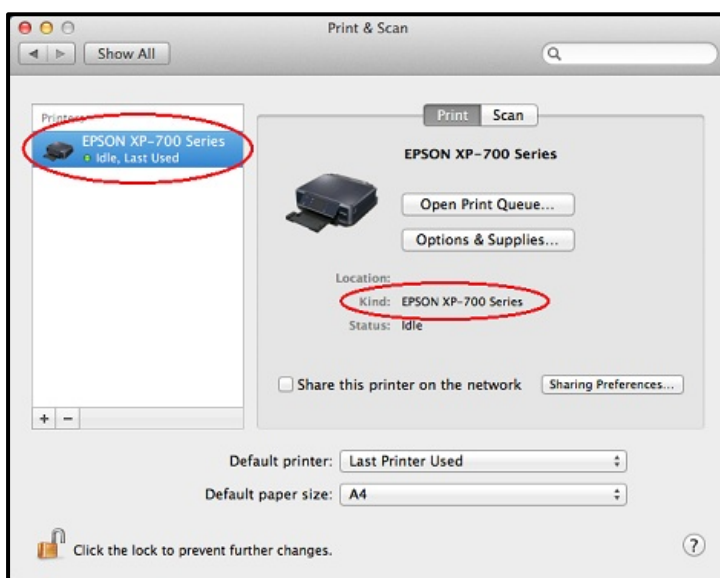
7. If the driver is not installed already you will be prompted to download it from Apple automatically. Click **Download & Install**.



- Wait for the software to be located, downloaded and installed.



- When the software is installed the printer will be automatically set up and ready to use.



## Download Instructions

- Go to the following website to download the latest Epson Printer Drivers package from Apple.  
[https://support.apple.com/kb/DL1792?locale=en\\_AU](https://support.apple.com/kb/DL1792?locale=en_AU)  
This link goes to the Apple support website which is not maintained by Epson Australia so the driver information may not be the latest from Epson.
- Click the **Download** button to download the printer drivers. To confirm your printer model is supported click the link for more information.

**Epson Printer Drivers v3.1 for OS X**

[Download](#)

This update installs the latest software for your EPSON printer or scanner for OS X Yosemite, OS X Mavericks, OS X Mountain Lion, and OS X Lion.

For more information about printing and scanning software, see <http://support.apple.com/kb/HT3669#epson>

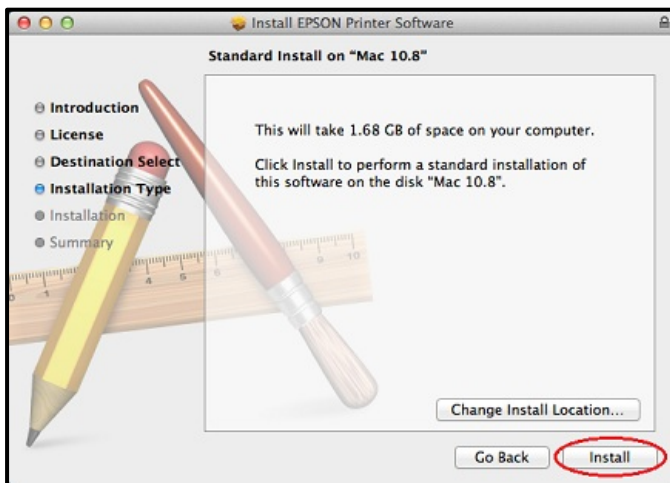
3. After the download has completed open the file and double click **EPSONPrinterDrivers.pkg**.



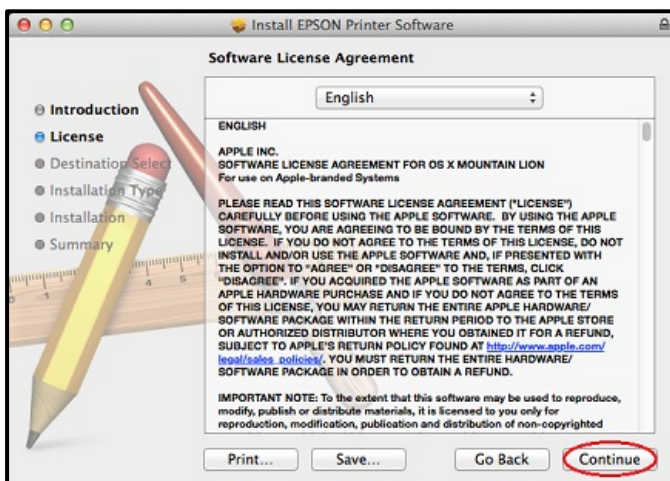
4. Enter your administrator password to allow installation to continue. **Click Install Software.**



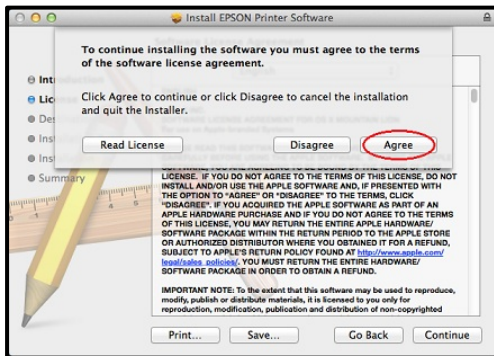
5. Do not change Install Location. Click **Install.**



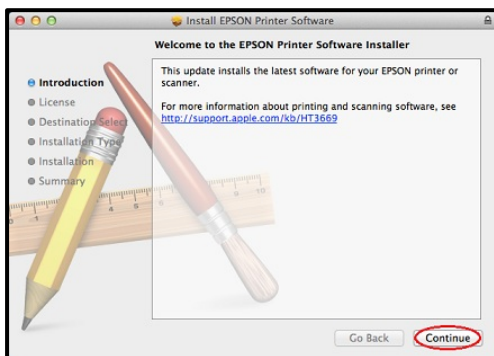
6. Click **Continue.**



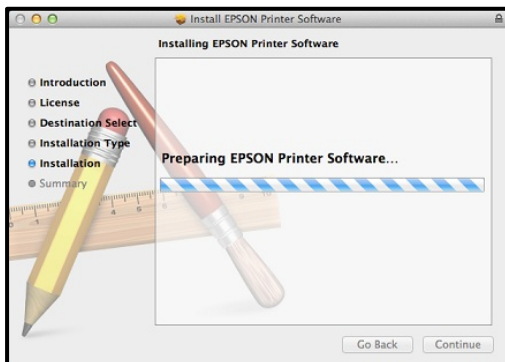
7. Click **Agree** to accept the software license agreement.



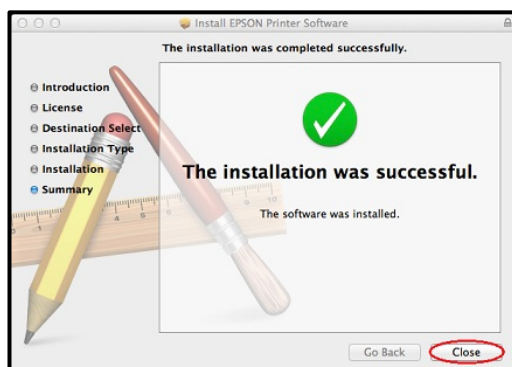
8. Click **Continue**.



9. Wait for the installation to proceed.



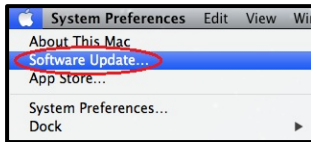
10. When installation has completed click **Close**.



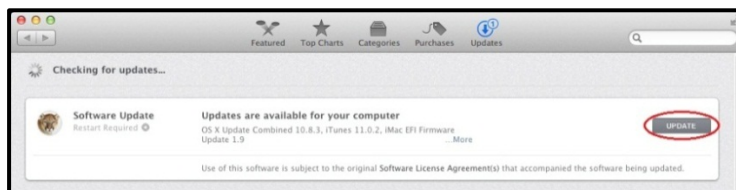
## Software Update Instructions

Periodically your Mac should automatically run a **Software Update** check with Apple to see if there are any updates for your computer. If there are any updates available for your Epson drivers they will appear as a software update. Simply run the updates along with any Apple software updates.

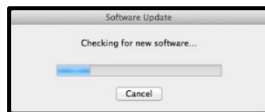
- You can manually initiate the check by choosing **Software Update** from the **Apple menu**.



- For Mac OS X 10.8 or 10.9 use the Updates section of App Store to run updates for your computer. Just click the **Update** button.



- For Mac OS X 10.6 and 10.7 a progress bar will appear while software is being checked.



- If there are updates available you can click **Continue** to run them, or click **Show Details** to see what software will be updated.

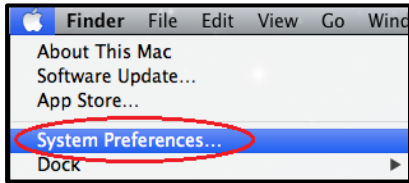


- Here there is an EPSON software update. Click **Install X Items** button to start installation.

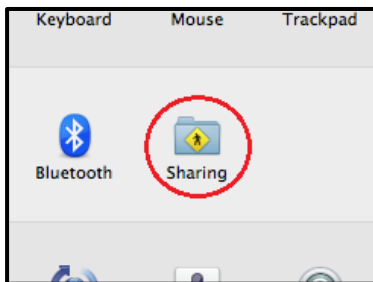


If you get an error when trying to print after installing the latest drivers for your printer follow these steps:

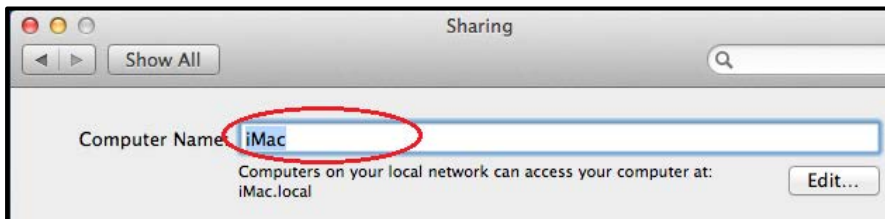
1. Open **System Preferences** from the **Apple Menu**.



2. Open the **Sharing** preference pane.



3. Ensure there is a **Computer Name**. If there isn't, type one in and push the Return key.



4. **Restart** your computer.

